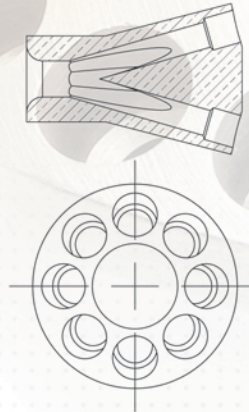




VENTURI-FLO™ LOW PRESSURE DROP DISTRIBUTORS

KeepFlo is proud of its legacy as the original designer of the Venturi-Flo™ low pressure drop distributor, renowned in the HVACR trade for its unique, one-piece design. Venturi-Flo™ distributors provide for maximum distribution efficiency to a multi-circuit evaporator, while ensuring minimum pressure drop. This is accomplished by utilizing a low pressure drop flow path in the design of the distributor, which results in a smooth-contour flow path that delivers equal distribution of the refrigerant to each evaporator circuit. Venturi-Flo™ distributors can be used on any direct expansion multi-circuit evaporator designed with equal length and equally loaded circuits.



Features and Benefits.

- Capacity ranges wider than standard orifice plate type distributors.
- No need for auxiliary nozzles or orifice inserts.
- Eliminates the possibility of installing the wrong nozzle.
- Can be mounted in any position and provide reliable performance.

Materials. Brass and aluminum (other materials upon request)

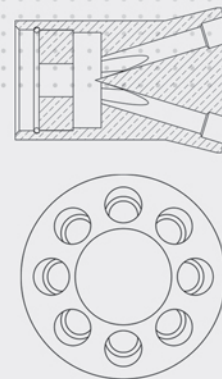
Specifications.

- Inlet sizes from 3/8" to 1-5/8"
- Circuit tube sizes from 5/32" to 1/2"
- From 2 to 24 circuit outlets

Options. Solder or flare inlet connections

NOZZLE -TYPE DISTRIBUTORS

KeepFlo's nozzle type distributors have permanent or replaceable sharp-edged orifice inserts to mix the two-phase refrigerant before it enters the coil circuit passages. These distributors rely on a sharp edge orifice to create turbulence that results in equal distribution to all the circuits.



Features and Benefits.

- The interchangeable orifices allow for one distributor body to be used for various types of refrigerants, different loads, and even different numbers of circuits.

Materials. Brass and aluminum (other materials upon request)

Specifications.

- Inlet sizes from 3/8" to 1-5/8"
- Circuit tube sizes from 5/32" to 1/2"
- From 2 to 54 circuit outlets

Options.

- Solder or flare inlet connections
- Hot gas bypass side connection

KeepFlo

a product of



Control
Devices, LLC

CUSTOM-BRAZED ASSEMBLIES

As a division of Control Devices, KeepFlo has broad machining and brazing capabilities in our modern manufacturing facilities located near St. Louis, Missouri. Both inlet tubes and outlet distributor tubes can be brazed to distributors for reliable, leak-free assemblies.

Put us to the test for your customized assembly requirements.



ABOUT KEEPFL0 AND CONTROL DEVICES

KeepFlo, Inc. was acquired by Control Devices, LLC in 2012. KeepFlo is a leading manufacturer of refrigerant distributors, critical components of air conditioning and refrigeration systems. KeepFlo supplies refrigerant distributors and brazed assemblies to leading air conditioning and refrigeration OEMs, subsystem manufacturers, and national and regional distributors.

Founded in 1963, Control Devices is a leading designer and manufacturer of specialty valves and other high quality flow control products that are supplied for standard and custom-engineered applications in diverse industries and systems such as pressure washers, air compressors, fire suppression systems, specialty gas, HVACR, and automotive applications.

CONTROL DEVICES, LLC
1555 LARKIN WILLIAMS ROAD
FENTON, MISSOURI 63026

+1 636.349.2626
+1 800.233.1477
FAX +1 314.781.7859

WWW.KEEPFLO.COM
WWW.CDIVALVE.COM

LARGE STOCK OF STANDARD DISTRIBUTORS THAT CAN BE SHIPPED IN 24 HOURS

LET OUR ENGINEERING STAFF WORK WITH YOU TO DEVELOP INNOVATIVE, ECONOMICAL DESIGN SOLUTIONS